

CULN

Colleges – University of Leicester Network

Higher and
further education
in partnership



University of
Leicester



The Colleges–University of Leicester Network brings together higher education institutions with further education colleges in the East and West Midlands. The Network provides opportunities for students and their teachers to engage in a range of projects involving curriculum innovation, development and progression.

A handwritten signature in black ink, reading "Bob Burgess".

Professor Robert Burgess
Vice-Chancellor, University of Leicester
Chair of the CULN Committee

The Colleges–University of Leicester Network

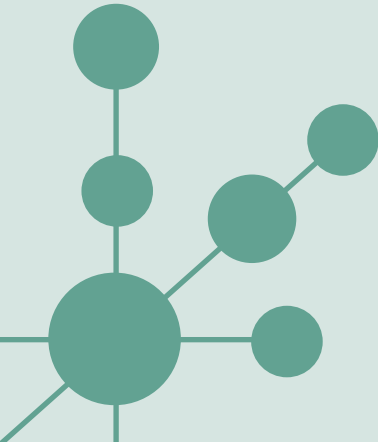
- A collaborative network of 22 further and higher education institutions.
- The network includes 3 higher education institutions, Bishop Grosseteste University College Lincoln, Newman College of Higher Education and the University of Leicester and 19 further education colleges. A land-based, sixth-form, general vocational and tertiary college membership reflects the diversity of the sector.

Aims of the Network

- To foster a co-operative relationship between its members and to promote greater collaboration, particularly in terms of the contemporary lifelong learning agenda and in widening access to higher education.
- To provide a network for sharing information about lifelong learning and other opportunities and to enable staff to work together in their respective fields.
- To create further links with businesses and local communities, in order to promote fair access and progression to HE and FE, and to assist in developing a regional lifelong learning framework.

How does it work?

- The network has a two-tier structure consisting of a strategic committee which debates policy and oversees the activities of the operational tier of working groups of FE and HE practitioners.
- CULN currently supports 11 working groups, including curriculum-specific groups (such as Geography, English and Chemistry) and more cross-cutting groups (such as Sustainable Development, Staff Development, International Students and Librarians).
- The network provides flexible mechanisms to enable FE and HE institutions in the region to collaborate on a variety of matters of common interest, such as foundation degrees, student activities, progression and research. The network develops by responding to changing needs and priorities so that working groups are formed and dissolved as required.



Curriculum groups:

Chemistry
Health and social care
Geography
English
Mathematics

Cross-cutting groups:

Sustainable development
FE/HE research
Librarians
Staff development
International students
Enterprise

New Groups:

ICT & E-learning
technologies
Biological sciences

Some of CULN's achievements

- Developing a Reciprocal Access Libraries Scheme for staff and students in all CULN institutions
- Brokering the development of 7 foundation degrees within the network
- Widening the routes into higher education with guaranteed progression foundation years
- Developing a progression agreement for international students from CULN colleges into higher education
- Hosting an annual chemistry activities day, attracting over 400 students
- Securing £91,500 of funding from the Learning and Skills Council (LSC)
- Developing a Certificate in Developing Professional Practice Award (DPPA) for support staff in colleges
- Securing funding for two audits (health, social care & childcare provision and modern foreign languages provision) attracting regional support and collaboration
- Developing a Professional Certificate in Education (PCE) for teaching staff
- Holding a series of science enterprise competitions
- Securing funding from Aimhigher and the Department of Health for action research
- Hosting chemistry revision events attended by over 80 students
- Hosting an Enterprise Evening, attended by 25 staff from CULN members, as well as some local business support organisations
- Promoting discussion between senior HE and FE staff on key policy areas and government papers such as the 'Future of Higher Education' and 'Success for All'
- Working together on the recruitment of international students
- Developing joint funding proposals for information technology projects
- Running a Partnerships in Science Evening, attended by 29 staff
- Holding a workshop on war literature for English tutors
- Setting up a special clearing hotline for students from CULN colleges
- Organising a CULN Development Day every year

The CULN team

The network development team acts as a point of contact between members and facilitates collaboration between different institutions. The team consists of a Development Officer and an Administrator who are responsible for facilitating working group meetings and their related activities and for servicing and providing papers to the committee. In addition, the CULN Development Officer arranges an annual development day, manages internal and external communications and is involved in a variety of external project work. This includes making funding bids, managing projects and sitting on various related groups across the region.

CULN on the web - www.le.ac.uk/culn

The Colleges–University of Leicester Network has a dedicated web site providing up-to-date information for members on current network activity and projects. Contact details for each working group are available together with minutes and agendas which can be downloaded. A calendar of events ensures that members don't miss any important dates.

Impact on learners

- The network was set up in 2001 with the express intention of assisting learners and the staff teaching them. Since then, over 1,000 students have directly benefited, for example by visiting the University to participate in various activities. In addition, over 150 staff have taken part in a variety of CULN workshops and courses.
- The CULN Committee is one of the largest groups of senior staff from higher and further education in the region who meet together to discuss how to improve opportunities for learners. The network is at the forefront of raising standards and building capacity in the post-16 learning sector and has a positive impact on learners by enhancing the professional development of FE and HE staff.



Benefiting learners: Students from CULN colleges enjoying a chemistry activities day hosted annually by the University of Leicester Chemistry Department.

'Membership of the international student working group has been valuable to us. The support of our partners has given us both access to their experience and the confidence to begin to market our University College to overseas students'

Graham Meeson, Senior Lecturer,
Bishop Grosseteste University
College Lincoln

'The network enables managers and teachers to work in partnership for the benefit of our local learners'

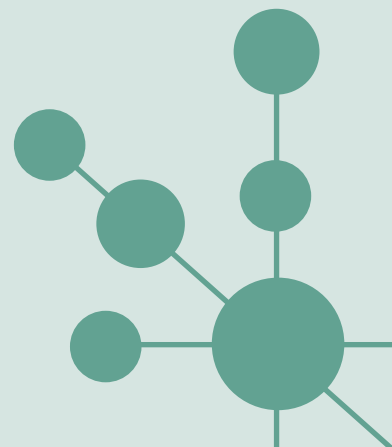
Nick Goffin, Principal,
Gateway Sixth-form College

'CULN is an ideal opportunity for discussing key issues and progressing ideas with a respected University'

Jim Mutton, Principal,
Loughborough College

'Newman College is one of the three higher education members of the network and values the opportunities CULN gives to work with colleagues in further education on projects that support progression into higher education'

Pamela Taylor, Principal,
Newman College of Higher Education



CULN Members:

1. University of Leicester

2. Bishop Grosseteste University
College Lincoln

3. Newman College of Higher Education

4. Bournville College of Further Education

5. Brooksby Melton College

6. Fircroft College of Adult Education

7. Gateway Sixth-Form College

8. Halesowen College

9. John Leggott College

10. Leicester Adult Education College

11. Leicester College

12. Lincoln College

13. Loughborough College

14. Moulton College

15. North Warwickshire
and Hinckley College

16. Northampton
College
17. Regent College

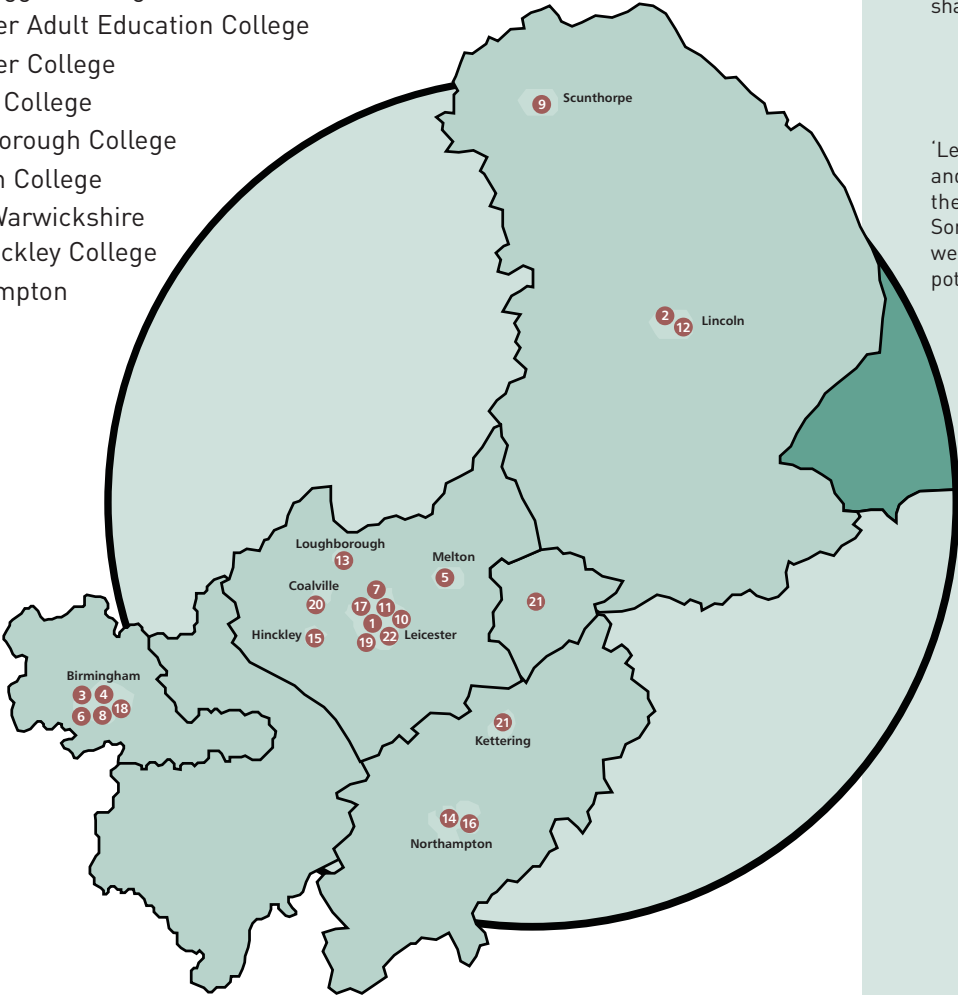
18. Sandwell College

19. South Leicestershire College

20. Stephenson College

21. Tresham Institute

22. Wyggeston and Queen
Elizabeth I College



‘Northampton College values its close relationship with the University of Leicester. The CULN enables us to identify areas of mutual interest and to develop them for the benefit of our learners’

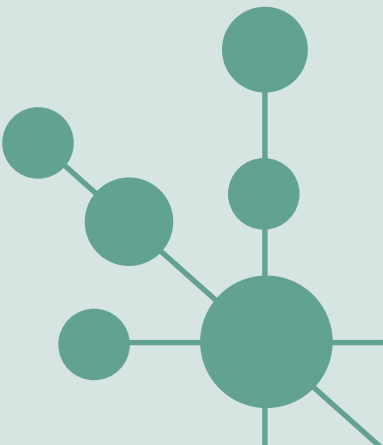
Len Closs, Principal,
Northampton College

‘Stephenson College has been a member of CULN since its inception and has valued the closer links it has allowed, both with the University itself and with other member organisations. The learners and staff have benefited from sharing good practice’

Dr David Rathe, Principal,
Stephenson College

‘Leicester College is an active partner and welcomes collaboration between the University and partner colleges. Some of the original activities are now well established and there is great potential for further developments’

Maggie Galliers, Principal,
Leicester College



'The work of CULN is crucial to FE and HE collaboration and planning of the curriculum across the region'

Annie White, Principal,
Brooksby Melton College

'The great majority of our students go on to higher education, many of them locally, and contact with the University, its staff and facilities is of great advantage to them. Staff, too, benefit from continued contact with the world of research and university teaching'

Ian C. Wilson, Principal,
Wyggeston and Queen Elizabeth I College

'We have found CULN very beneficial to our students and staff at the College. It has allowed our staff to discuss curriculum matters with colleagues at the University to ease the applications of our students to the University of Leicester, which is an increasingly popular choice for them'

David Linnell, Principal,
John Leggott College



University of
Leicester



Newman
HIGHER EDUCATION IN BIRMINGHAM



Bournville College



WYGGESTON & QUEEN
ELIZABETH I COLLEGE

Contact Details

If you would like more information about the network, or to discuss any potential areas of collaboration, please contact:

Elain Crewe
Tel: 0116 252 5920
E-Mail: ec73@le.ac.uk

Lucy Arnold
CULN Secretary
Te: 0116 252 5966
E-Mail: laa4@le.ac.uk

Institute of Lifelong Learning
128 Regent Road
Leicester
LE1 7PA
www.le.ac.uk/culn



University of
Leicester

INSTITUTE OF LIFELONG LEARNING